

Name	Torque in Nm
Horn fixing screw - M8	22 Nm (16.23 lbf ft)

Overhaul data

Assembly clearances

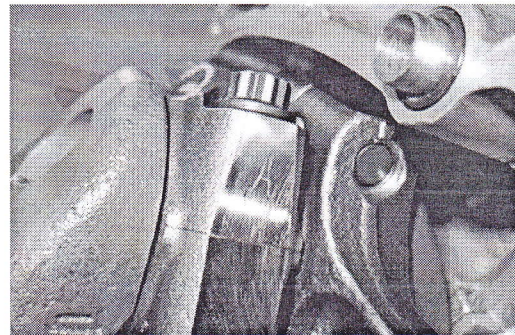
Crankcase - crankshaft - connecting rod

To choose the appropriate spare parts for the coupling bushings, check the type of original components and the correct bushing on the table.

The type of component is engraved with laser pen on the components themselves.

NOTE

THE CRANKCASE TYPE IS ENGRAVED ON BOTH CRANKCASE HALVES.

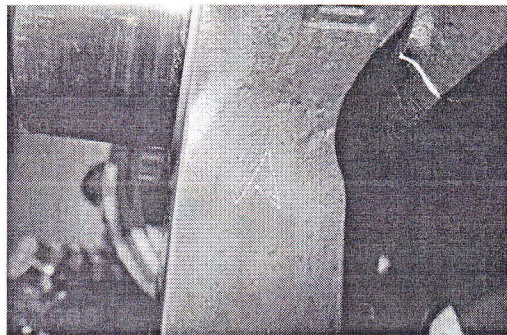


COUPLING TYPES - SHAFT - CONNECTING ROD

Specification	Desc./Quantity
Shaft - Connecting rod: A - A - BLUE types	Shaft- A \varnothing 34.984 mm - 34.991 mm (1.37732 in - 1.37759 in) Connecting rod - A \varnothing 38.000 mm - 38.012 mm (1.49606 in - 1.49653 in) Colour: BLUE
Shaft - Connecting rod: A - B - YELLOW types	Shaft- A \varnothing 34.984 mm - 34.991 mm (1.37732 in - 1.37791 in) Connecting rod - B \varnothing 38.013 mm - 38.025 mm (1.49657 in - 1.49704 in) Colour: YELLOW
Shaft - Connecting rod: B - A - GREEN types	Shaft- B \varnothing 34.992 mm - 35.000 mm (1.37763 in - 1.37795 in) Connecting rod - A \varnothing 38.000 mm - 38.012 mm (1.49606 in - 1.50078 in) Colour: GREEN
Shaft - Connecting rod: B - B - BLUE types	Shaft- B \varnothing 34.992 mm - 35.000 mm (1.37763 in - 1.37795 in) Connecting rod - B \varnothing 38.013 mm - 38.025 mm (1.49657 in - 1.49704 in) Colour: BLUE

Specification

Desc./Quantity



COUPLING TYPES - SHAFT - MAIN BEARING

Specification

Desc./Quantity

Shaft - Main bearing: A - A - BLUE types	Shaft- A \varnothing 34.984 mm - 34.991 mm (1.37732 in - 1.37759 in) Main bearing - A \varnothing 41.000 mm - 41.007 mm (1.61417 in - 1.61444 in) Colour: BLUE
Shaft - Main bearing: A - B - YELLOW types	Shaft- A \varnothing 34.984 mm - 34.991 mm (1.37732 in - 1.37759 in) Main bearing - B \varnothing 41.008 mm - 41.016 mm (1.61448 in - 1.61480 in) Colour: YELLOW
Shaft - Main bearing: B - A - GREEN types	Shaft- B \varnothing 37.992 mm - 38.000 mm (1.49574 in - 1.49606 in) Main bearing - A \varnothing 41.000 mm - 41.007 mm (1.61417 in - 1.61444 in) Colour: GREEN
Shaft - Main bearing: B - B - BLUE types	Shaft- B \varnothing 37.992 mm - 38.000 mm (1.49574 in - 1.49606 in) Main bearing - B \varnothing 41.008 mm - 41.016 mm (1.61448 in - 1.61480 in) Colour: BLUE

